

# Voucher redemption instructions

How to use the **voucher code** in the **individual registration system**

## 1 Login [here](#) and enter:

- **Username:** the email address associated with your ESMO Account. If forgotten, please contact [groups@esmo.org](mailto:groups@esmo.org)
- **Password:** the personal password you set. If forgotten, please reset from [here](#).

## 2 Choose “Register yourself”

European Lung Cancer Congress 2023  
Individual Registration for the European Lung Cancer Congress 2023  
Would you like to register yourself?

European Lung Cancer Congress 2023  
Group Registration for the European Lung Cancer Congress 2023  
Would you like to register a group?

European Lung Cancer Congress 2023  
Third Party Registration for the European Lung Cancer Congress 2023  
Would you like to register someone else? Or several people (less than 10)?

## 3 Tick the box to accept the terms and conditions and click “Next”:

**1 Information**  
2 Voucher  
3 Invoice Address  
4 Healthcare Qualification  
5 Industry registration  
6 Partner Membership  
7 Onsite Participation  
8 Fees

**Welcome to the European Lung Cancer Congress 2023 registration system.**  
The individual registration allows you to register yourself.  
Please make sure to have read the [individual registration instructions](#) and the information below, before starting the registration.

**Registration requirements:**

- A personal address (Institution/Company or private) and email address for each delegate must be provided during the registration process.
- Multiple registrations with the same email address will not be accepted by the system

**ESMO Privacy & Data Security Policy and Meeting Registration Terms & Conditions:**  
Registration to the Congress implies the review of the [ESMO Privacy and Data Security Policy](#) and the acceptance of the [Meeting Registration Terms & Conditions](#). Please kindly read them carefully. By accepting these Terms, you agree to be contacted by ESMO for communication about the meeting you have registered for and any other communications agreed to during the account creation process. The acceptance of the Meeting Registration Terms and Conditions is requested to continue with the registration.

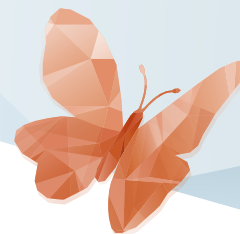
☒ I have reviewed the [ESMO Privacy and Data Security Policy](#) and accept the [ESMO Meeting Registration Terms and Conditions](#)

Organisers



Partners





**4** Insert your voucher code in the open text field and click “Next”:

**5** You will see the logo of the sponsor displayed, click “Next”:



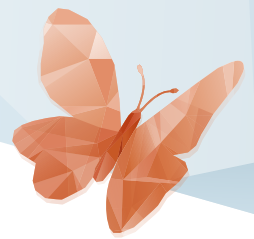
**6** Select your prescriber status and click “Next”:

Organisers



Partners





**7** Indicate whether or not you work for the pharmaceutical industry and click “Next”:

\* Do you work for the Pharmaceutical Industry? ([Clear selection](#))

☐ Yes

☒ No

Back Next

**8** Indicate if you have an active membership with one of our partners then proceed with “Next”:

Partner Membership

Are you member of:

If applicable, please tick the checkbox below the respective association and enter your membership number in the textbox

IASLC  
(please provide your membership ID number)

☐

ESTS  
(please provide your membership ID number)

☐

ESTRO  
(please provide your membership ID number)

☐

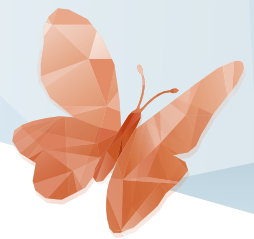
Back Next

Organisers



Partners






9 Select on-site (Yes) or online (No) participation and click “Next”:

**ONSITE OR ONLINE PARTICIPATION**

• Will you attend the European Lung Cancer Congress 2023 onsite in Copenhagen? ([Clear selection](#))

☐ Yes 

☐ No

Please kindly inform us by **Wednesday, 8 March 2023**, if your participation changes.


**ESMO COVID-19 regulations to access the congress**

ESMO requires that all attendees are fully vaccinated against Covid-19 OR recovered in the last 6 months with at least one dose of a vaccine by the time of the Congress. Vaccination proof will not be checked by ESMO.

Additionally, we strongly recommend:

- Testing for Covid-19 within 48 hours prior to the inbound trip with a molecular, rapid antigen or self-test. The result will not be checked by ESMO
- Wearing a face mask in closed spaces
- Avoid shaking hands; wash your hands regularly and use hand sanitiser

Please note that each participant need to follow the [specific country COVID-19 regulations](#) approved by the local authorities, if more restrictive than the ESMO regulations.



10 Select “Free voucher” and click “Finalise” to complete your registration

▼ **Registration Tickets**

☐ Free Voucher (€ 0.00 VAT included) 