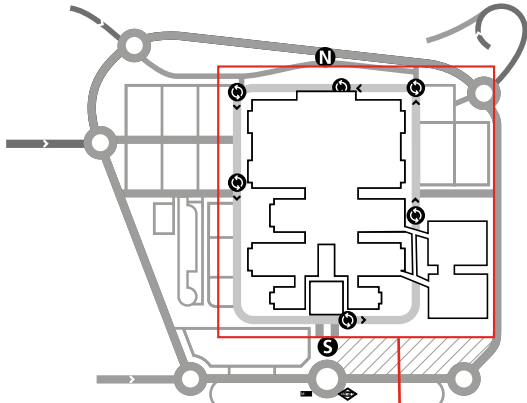






**Information on Emergency Measures and Evacuation at Fair Sites,
Plan showing the Location of Evacuation Routes, Emergency Exits,
Firefighting Equipment and Medical Facilities**

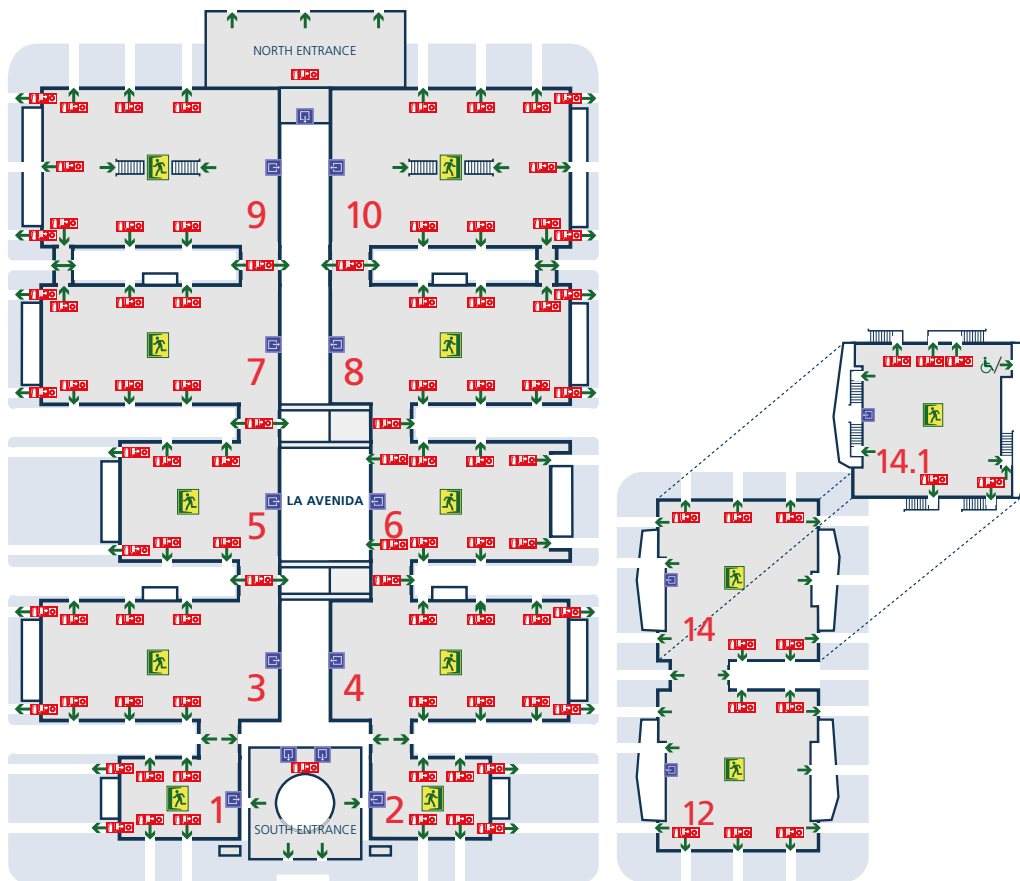
General Site Plan



NOMENCLATURE

	Medical Services
	Evacuation Route
	Emergency Exits
	Firefighting Equipment

Enlarged plan of the exhibition areas



Basic Emergency and Evacuation Regulations

- When you arrive at your work area, identify the Evacuation Routes, Emergency Exits and Firefighting Equipment, and show them to your personnel.
- When you hear the Evacuation Order, transmit it to all the personnel for whom you are responsible and start evacuation immediately.
- Leave the area via the Evacuation Routes to the Emergency Exits.
- Be sure that all your personnel leave ahead of you and go to the announced meeting point. If you notice anyone is missing, tell the emergency teams.
- Avoid anything which might cause panic.
- Aisles and evacuation routes must be kept free of objects at all times.