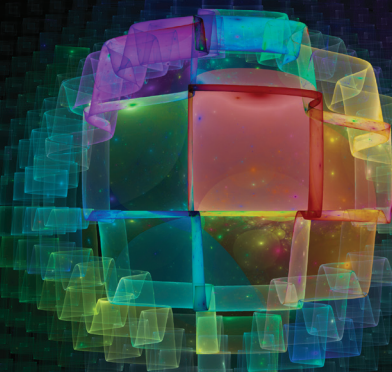


ESMO 2014 Industry Satellite Symposium

# Biomarkers in Colorectal Cancer and the Quest for Personalized Treatments

Friday, September 26, 2014 | 14:00 – 16:30

IFEMA – Feria de Madrid | Cordoba Auditorium | Madrid, Spain



## FACULTY

**Sabine Tejpar, MD, PhD (Chair)**  
University Hospital Gasthuisberg  
Leuven, Belgium

**Ian Chau, MD**  
Royal Marsden Hospital  
Sutton, Surrey, UK

**Annette K. Larsen, DVM, PhD**  
Hôpital Saint-Antoine  
Paris, France

**Harpreet Wasan, MD**  
Imperial College Health NHS Trust  
London, UK

## AGENDA

- 14:00 – 14:10 *Welcome & Introduction*  
**Sabine Tejpar, MD, PhD**
- 14:10 – 14:30 *Tumor Environment: Biology and Origin of CRC*  
**Annette K. Larsen, DVM, PhD**
- 14:30 – 14:40 *Q&A and Panel Discussion*
- 14:40 – 15:05 *Clinical and Biological Parameters Impacting Response to Therapy*  
**Sabine Tejpar, MD, PhD**  
*Clinical Case: Pairing Targeted Agents With Chemotherapy and Implementing RAS Testing*
- 15:05 – 15:15 *Q&A and Panel Discussion*
- 15:15 – 15:40 *Which Patients Derive Benefit from Targeted Therapies? What Subgroup Analyses Findings Tell Us*  
**Ian Chau, MD**  
*Clinical Case: Choice of Anti-Angiogenic for mCRC*
- 15:40 – 15:50 *Q&A and Panel Discussion*
- 15:50 – 16:15 *Future Perspectives in Biomarker Development*  
**Harpreet Wasan, MD**  
*Clinical Case: Emerging Response Biomarkers in mCRC*
- 16:15 – 16:25 *Q&A and Panel Discussion*
- 16:25 – 16:30 *Conclusions*  
**Sabine Tejpar, MD, PhD**